

TOP BLOOD TESTS

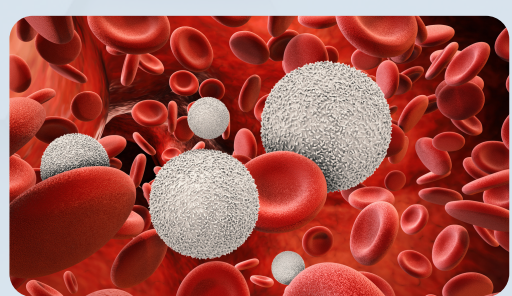
for Children



If you're looking for a way to keep your child healthy, blood tests are an essential tool. They can help detect health problems before they become serious and can help your child's healthcare provider determine if any treatments are necessary. Stay on top of their health with our comprehensive guide to the most important blood tests for children.

Complete Blood Count with Differential

The complete blood count with differential is a common blood test that provides valuable information about your child's overall health. It measures the types and number of cells in their blood and can help detect anemia and infection.



What the Test Measures:

- Red blood cells
- White blood cells
- Platelets

Why the Test is Important:

This test is useful for the diagnosis of disease and to see how well treatments are working.

Comprehensive Metabolic Panel

The comprehensive metabolic panel (CMP) is a blood test that measures the levels of different chemicals and substances in your child's blood. The test can help detect liver and kidney problems, diabetes, and electrolyte imbalances.

What the Test Measures:

- Blood sugar levels
- Electrolyte levels
- Kidney function

Why the Test is Important:

This test is let's your child's provider know how well their kidneys and liver are functioning

Lipid Panel

The lipid panel measures the levels of different fats and cholesterol in your child's blood. High levels of cholesterol and fats can lead to cardiovascular disease, so a lipid panel can help detect and prevent these issues early.

HDL CHOLESTEROL

This is often called "good" cholesterol and helps to remove excess cholesterol from the blood.

LDL CHOLESTEROL

This is often called "bad" cholesterol and can build up in your child's arteries, leading to heart disease.

TRIGLYCERIDES

These are another type of fat in the blood that can also increase the risk of heart disease.

Hemoglobin A1C w/eAG

The hemoglobin A1C test measures how much glucose (sugar) has been sticking to your child's red blood cells over the past few months. This test can help detect problems with blood sugar levels and diabetes.



What is eAG?

eAG stands for estimated average glucose, which is a calculation based on the A1C test results. It provides a more accurate picture of your child's average blood sugar levels over the past few months.

Thyroid-Stimulating Hormone

The thyroid-stimulating hormone (TSH) test measures the level of TSH in your child's blood. This hormone is produced by the pituitary gland and helps regulate the thyroid gland, which controls metabolism.



Why the Test is Important:

The test can help detect thyroid problems, which can cause a variety of health problems and affect your child's growth and development.

Visit one of our pediatric Patient Service Centers

Contact a customer service representative at 1-877-402-4221 or visit our FAQs for additional information or assistance.

